

Figure 4.3
Unmitigated Maximum Hourly TSP Concentration at 1.5m above ground
(Scenario 1 - Active Works Areas Shift to South)

File: Final\0101759_0101759_Air_southhourly.mxd
 Date: 29/11/2010

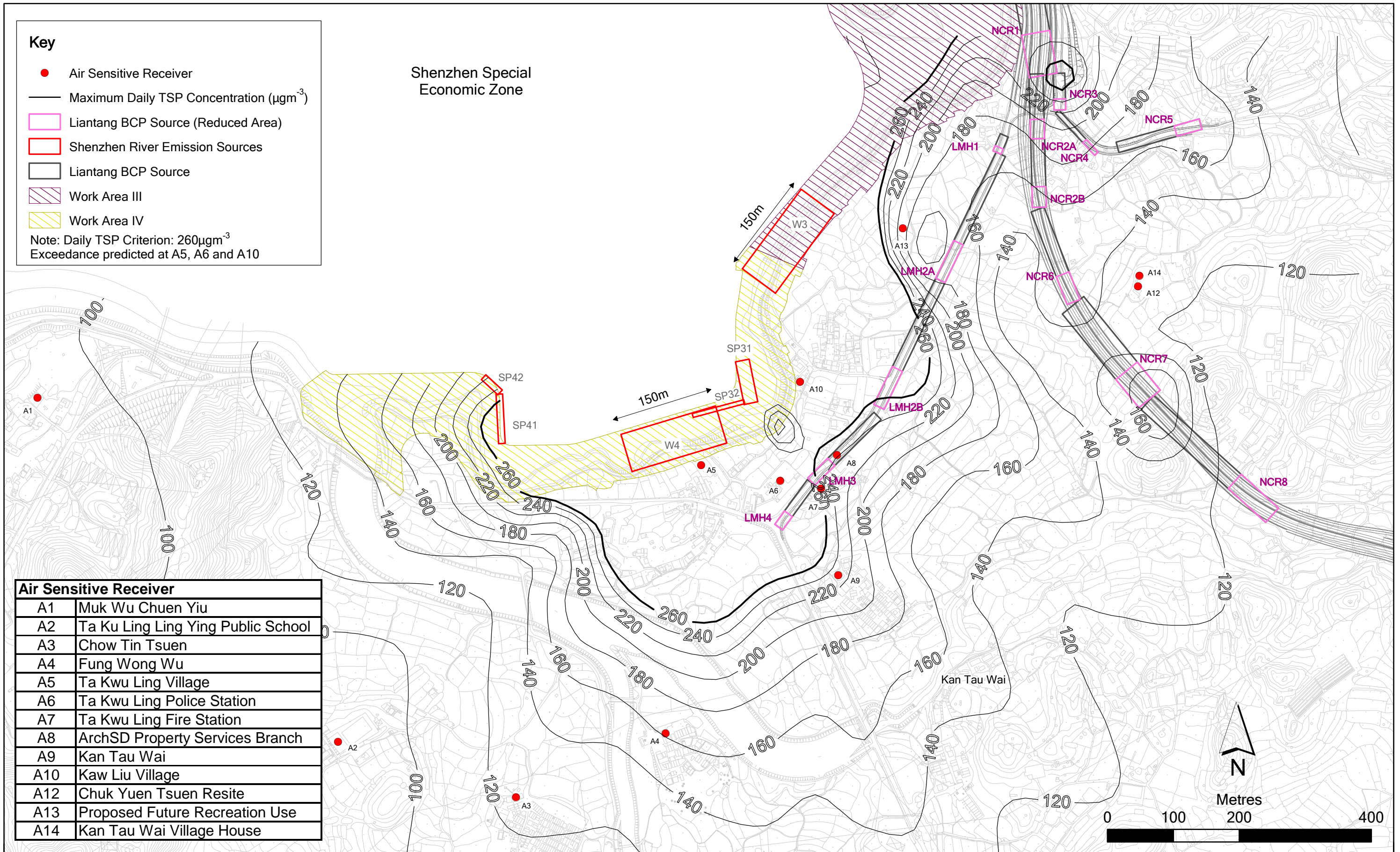


Figure 4.4

Unmitigated Maximum Daily TSP Concentration at 1.5m above ground
(Scenario 1 - Active Works Areas Shift to South)

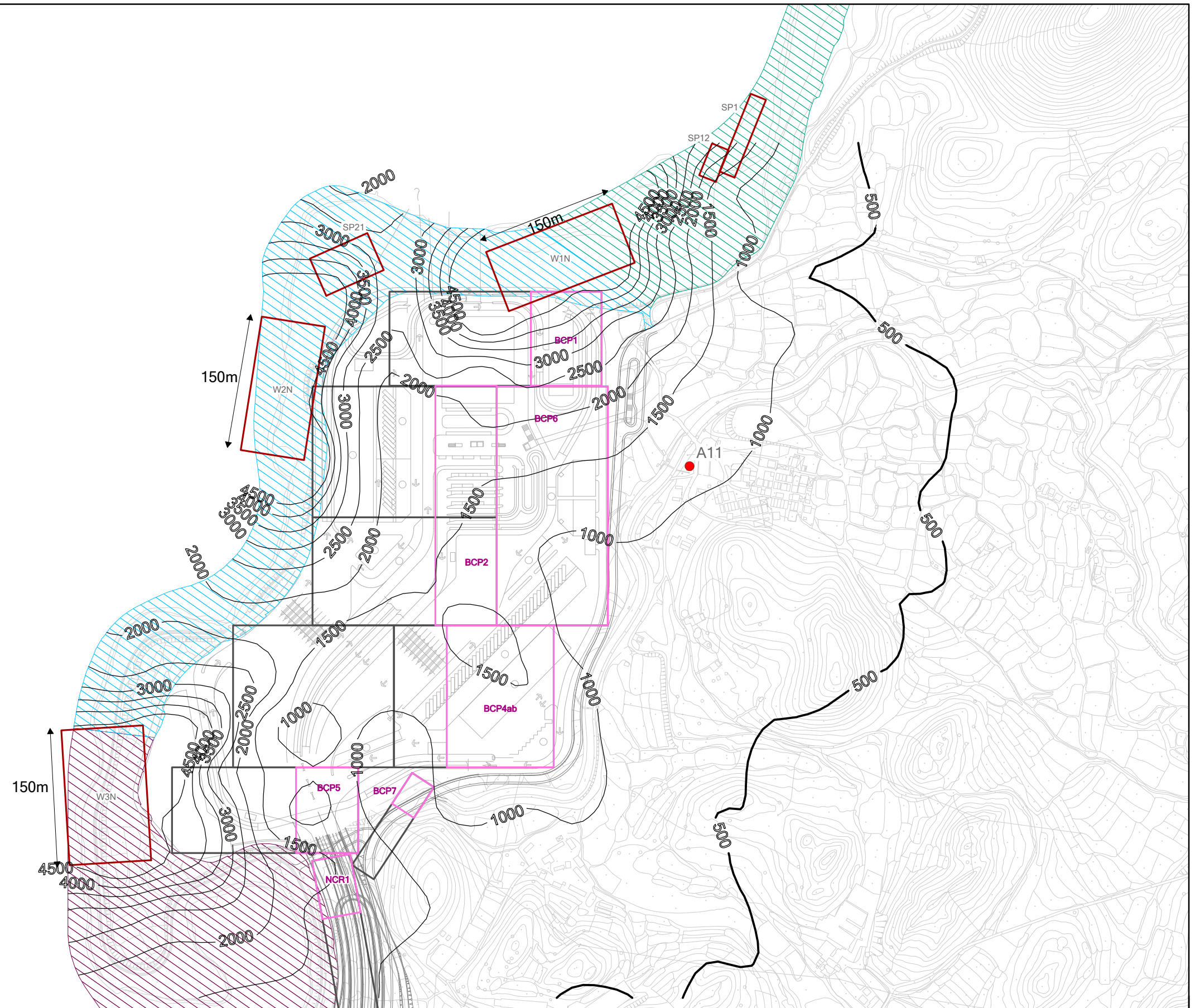
File: Final0101759_Air_southdaily.mxd
Date: 29/11/2010

Key

- Air Sensitive Receiver
 - Maximum Hourly TSP Concentration ($\mu\text{g}\text{m}^{-3}$)
 - Liantang BCP Source (Reduced Area)
 - Shenzhen River Emission Sources
 - Liantang BCP Source
 - Work Area I
 - Work Area II
 - Work Area III
- Note: Hourly TSP Criterion: $500\mu\text{g}\text{m}^{-3}$
Exceedance predicted at A11

Air Sensitive Receiver

A11	Tsung Yuen Ha
-----	---------------



Metres



深圳市治理深圳河办公室

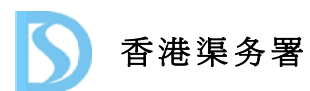


Figure 4.5

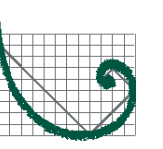
Unmitigated Maximum Hourly TSP Concentration at 1.5m above ground
(Scenario 2 - Active Works Areas Shift to North)

File: Final\0101759_Air_northhourly.mxd
Date: 29/11/2010



长江水资源保护科学研究所

CHANGJIANG WATER RESOURCES PROTECTION INSTITUTE



ERM

Key

- Air Sensitive Receiver
 - Maximum Daily TSP Concentration ($\mu\text{g}\text{m}^{-3}$)
 - Liantang BCP Source (Reduced Area)
 - Shenzhen River Emission Sources
 - Liantang BCP Source
 - Work Area I
 - Work Area II
 - Work Area III
- Note: Daily TSP Criterion: $260\mu\text{g}\text{m}^{-3}$
Exceedance predicted at A11

Air Sensitive Receiver

A11	Tsung Yuen Ha
-----	---------------

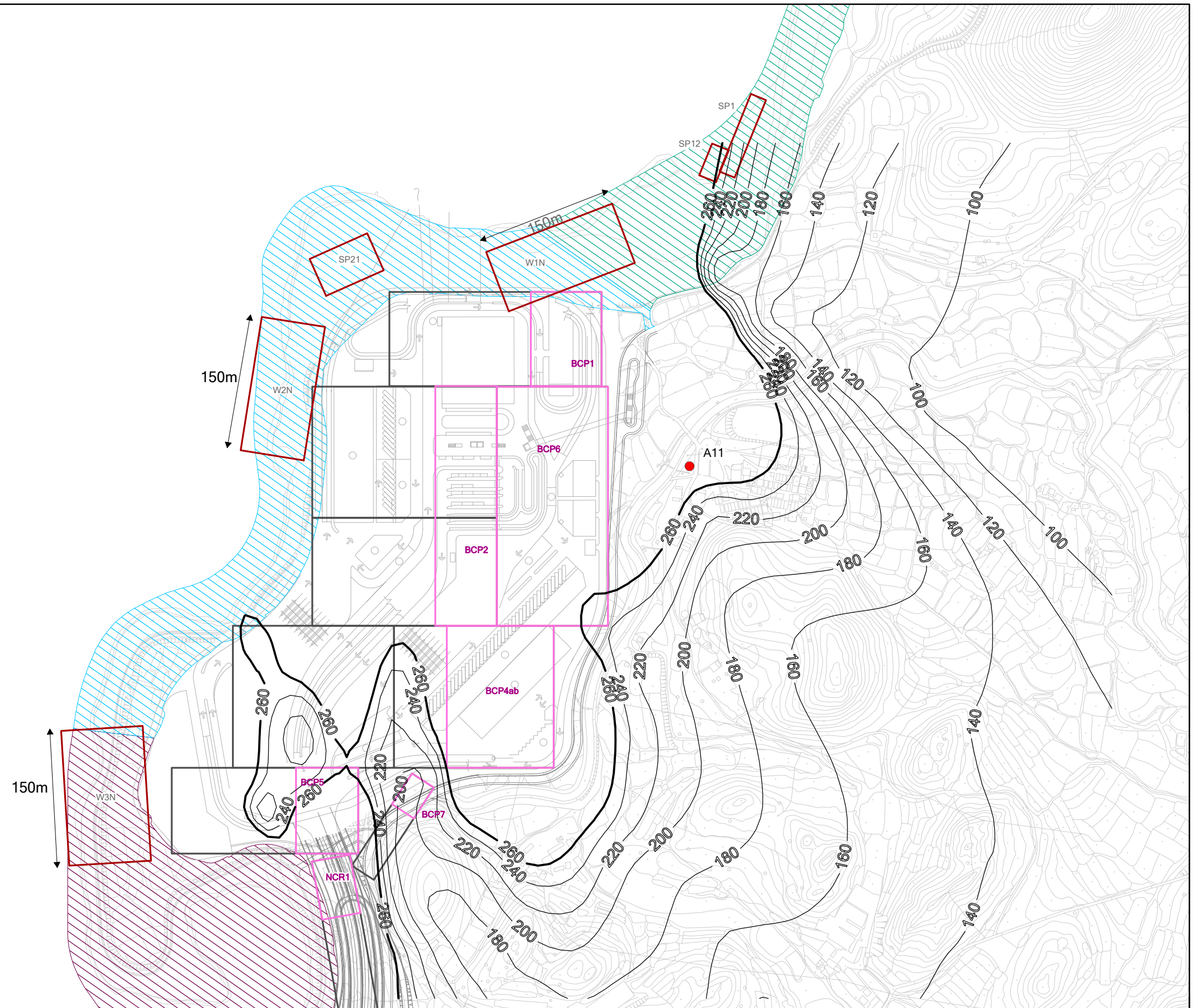


Figure 4.6

Unmitigated Maximum Daily TSP Concentration at 1.5m above ground
(Scenario 2 - Active Works Areas Shift to North)

Key

- Air Sensitive Receiver
 - Annual Average TSP Concentration ($\mu\text{g}\text{m}^{-3}$)
 - BCP Emission Sources
 - Shenzhen River Emission Sources
 - ▨ Project site
- Note: Annual TSP Criterion: $80\mu\text{g}\text{m}^{-3}$
Exceedance predicted at A5-A8, A10 and A13

Air Sensitive Receiver

A1	Muk Wu Chuen Yiu
A2	Ta Ku Ling Ling Ying Public School
A3	Chow Tin Tsuen
A4	Fung Wong Wu
A5	Ta Kwu Ling Village
A6	Ta Kwu Ling Police Station
A7	Ta Kwu Ling Fire Station
A8	ArchSD Property Services Branch
A9	Kan Tau Wai
A10	Kaw Liu Village
A11	Tsung Yuen Ha
A12	Chuk Yuen Tsuen Resite
A13	Proposed Future Recreation Use
A14	Kan Tau Wai Village House

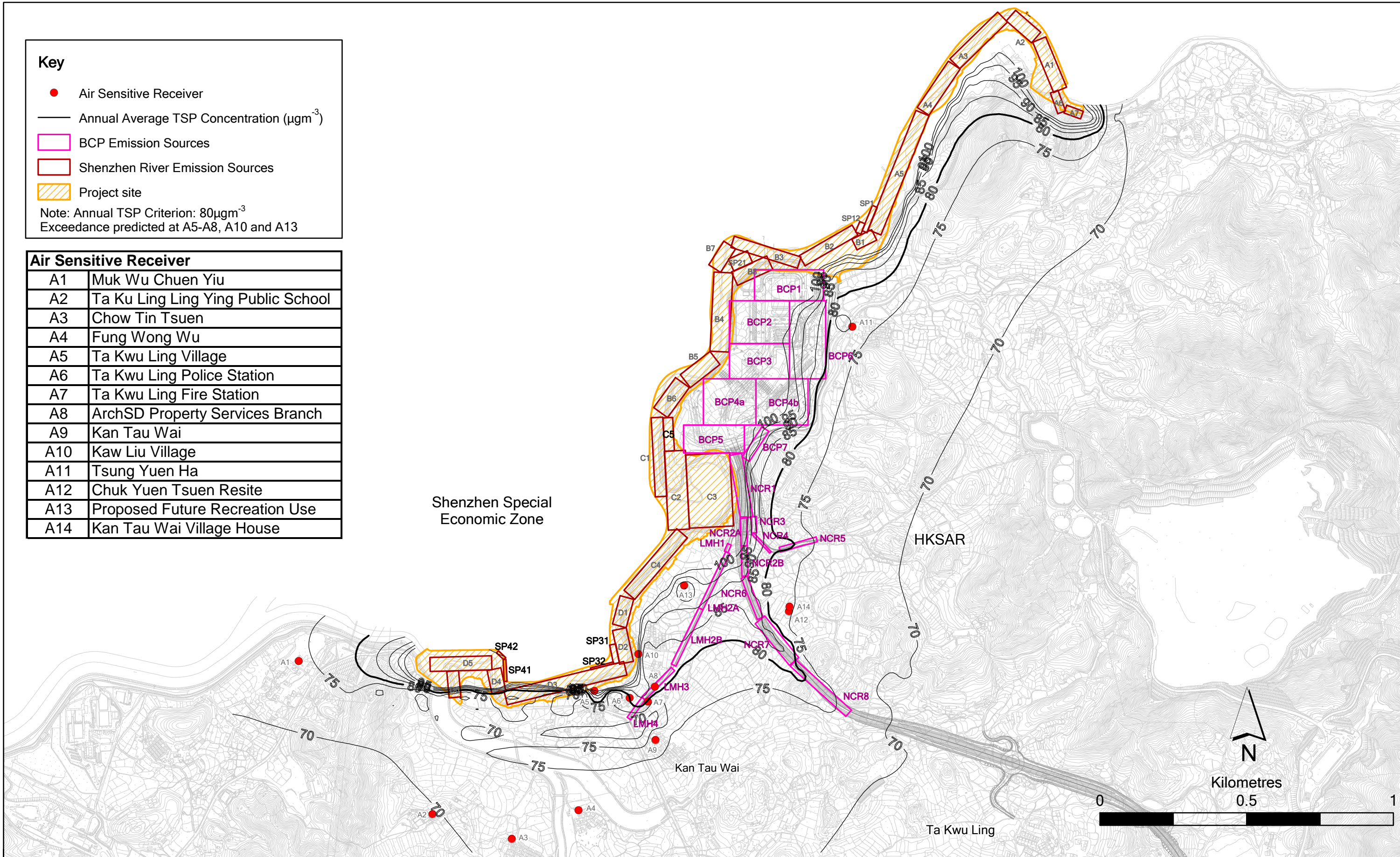


Figure 4.7

Unmitigated Annual Average TSP Concentration at 1.5m above ground

File: Final\0101759_Air_unmitigated annual.mxd
Date: 30/11/2010